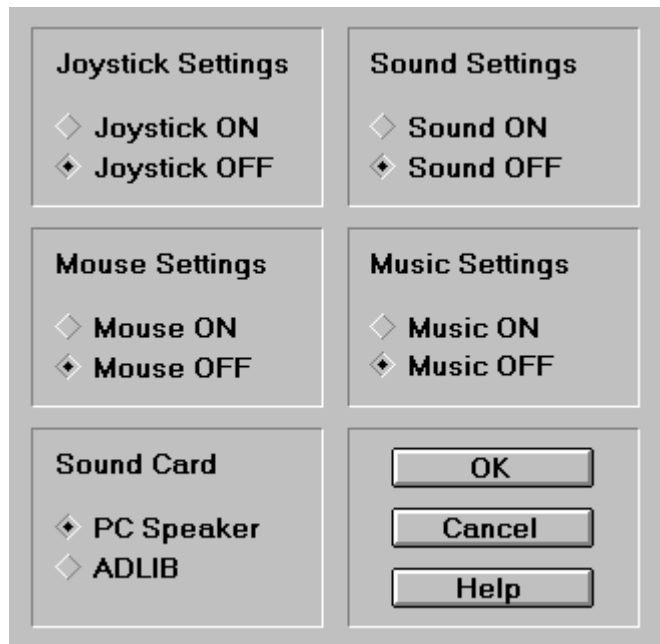


# Flight Sim Setup Help



The SIM setup program allows you to alter settings in your Sierra flight SIM. You must set up your flight sim at least once after installing it by running this utility. This utility will come up during the installation process, allowing you to perform the initial setup of your game. Afterwards, you can run this setup program as many times as you like and alter the games settings.

The sound card selections in your flight SIM are either PC Speaker or ADLIB. ADLIB is supported by almost every sound card available today including all Sound Blaster compatible cards. If your Windows Environment supports a sound card, it probably supports ADLIB. PC Speaker is the other alternative to ADLIB. This option lets the flight SIM use your computers internal speaker to generate sound effects and music. The ADLIB option is far superior so we recommend using it if you can.

[Click on any of the sections or buttons to the right to see a description of the items function.](#)

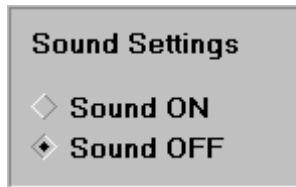
{ewc MVBMP2, ViewerBmp2, joy.bmp}

This section configures your joystick settings in the flight sim. You can turn on the use of a joystick by clicking on the ON radio button. Conversely, you can turn off the use of the joystick by clicking on the OFF radio button. You will also be able to turn on or off the joystick in the SIM itself once you run the game. You can use the joystick in the game to navigate the menus and control your plane.

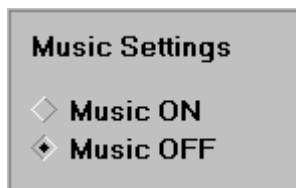
{ewc MVBMP2, ViewerBmp2, mouse.bmp}

This section configures your mouse settings in the flight sim. You can turn on the use of a mouse by clicking on the ON radio button. Conversely, you can turn off the use of the mouse by clicking on the OFF radio button. You will also be able to turn on or off the mouse in the SIM itself once you run the game. You can use the mouse in the game to navigate the menus and control your

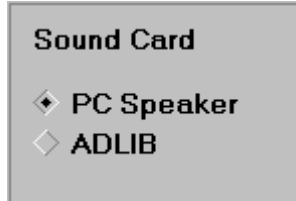
plane.



You can turn on or off the use of sound effects in your game by clicking on the ON or OFF radio buttons in this section. Sound effects are any sounds produced by the SIM such as gun fire, engine noises etc. that are not considered music. You can turn the music on or off separately in the Music Settings section.



You can turn on or off the music in your game by clicking on the ON or OFF radio buttons in this section. The theme music and background music in the menus can be turned on or off. You can turn the sound effects on or off separately in the Sound Settings section.



Use this section to select which sound card you wish to use. A10 1.5, Red Baron Aces of the Pacific and Aces Over Europe only support your internal PC Speaker or an ADLIB compatible card such as a Sound Blaster. Almost all sound cards will play ADLIB sounds so, if your system has a sound card installed, it probably can play ADLIB sound effects and music. You can turn on or off sound effects by clicking on the ON or OFF radio buttons in the Sound Settings section. You can also turn on or off music by clicking on the ON or OFF radio buttons in the Music Settings section.



Click on the OK button to exit the SIM Setup program and save your changes. Your changes will take effect the next time you run the flight SIM.



Click on the CANCEL button to exit the SIM setup program WITHOUT saving your changes.



Click on the HELP button to view this help file.

